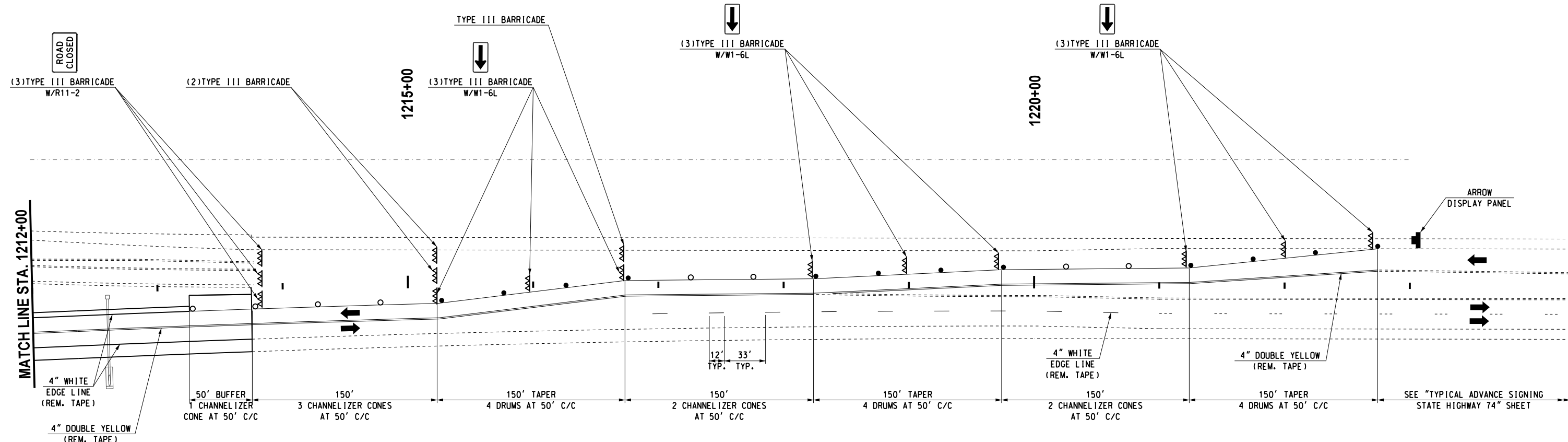
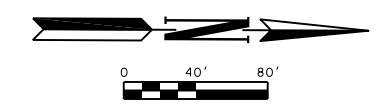


REVISIONS		
NO.	DESCRIPTION	DATE



MATCH LINE STA. 1212+00

ROAD CLOSED

ALL PAVEMENT MARKINGS SHALL BE REMOVABLE TAPE

CONTRACTOR SHALL KEEP 11' MINIMUM LANES UNLESS OTHERWISE NOTED.

CONTRACTOR TO PROVIDE ACCESS TO ALL DRIVEWAYS DURING CONSTRUCTION.

LEGEND	
△△△	- TYPE III BARRICADE W/ TWO TYPE "A" LIGHTS
●	- DRUM
○	- CHANNELIZER CONE
▬	- PORTABLE CONC. BARRIER WALL
▬▬▬	- CONSTRUCTION ZONE IMPACT ATTENUATOR
■	- WORK AREA

Design	RWR	08/10/17
Drawn	GDB	08/10/17



TRAFFIC CONTROL PHASES 2M (SHEET 7 OF 7)
S.H. 74 (STA. 1188+00 TO 1212+00)
 State Job No. 14964(08) Sheet No. 158

08/10/17 G:\0\Projects\T-1662B SH 74 @ NW 178th, NW 192nd & NW 206th\CAD\TC PHASE 2M.7 SH 74.dgn